

Get-Back-To-Grass

Lowline Sale & Field Day

Saturday, Oct. 9, 2010

at the new sale facility at Pitchford Cattle Company, Athens, TX

Offering 61 Lots:

- 13 Fullblood Females
- 31 Percentage Females
- 10 Fullblood Bulls
- 7 Percentage Bulls

Sponsored By:

**Southwest Lowline Angus
Breeders Association**
www.slaba.us

Mark Roesler, President • 713-805-5916

Can't attend the sale?

Watch & Bid online!

LIVE ON THE INTERNET. LIVE AUDIO. VIDEO. BIDDING.
LiveAuctions.TV



Consignors Index

Bailey Ritter Farms

Holt MO 816-590-2258 Lots 3, 19, 38, 39, 40, 59

Daniels Switch Cattle Co, Robert & Debbie Mason

Carthage, TX 903-693-7333 Lots 13, 54, 55

Morgan Davis

Henderson TX 903-241-4964 Lots 16, 48

Double K Adventures. Karla Kovac-Grier

Stewartsville MO 816-419-9970 Lot 58

5E Farms, Ben Edwards

Austin TX 512-657-0109 Lots 18, 20, 21, 22, 23

Flying J & L Ranch, Larry & Kim Watkins

Groesbeck TX 979-481-0951 Lots 14, 41, 42, 43, 44, 45, 60, 61

K Bar W Ranches

McLoud TX 405-255-0893 Lots 4, 8, 9, 10, 11, 46

Pecan Creek Farm, William & Joan Cabaniss

Taylor TX 512-365-5840 Lot 7

Rocking Lowlines, Stuart Pyburn

Pipe Creek TX 830-510-2326 Lot 17, 47

Rockin L Lowlines, Linda Fredrickson

Mt. Vernon TX 903p-537-3194 Lots 6, 49, 50, 51, 52, 53

Schulz Farm

Bay City TX 979-429-0208 Lot 5

Sherjoy Farm, Marjo Gore

Bullard TX 75757 Lots 15, 56

Stafford and Associates, Troy Stafford

Bartlesville OK 918-336-5000 Lots 24 - 37

Texas Spur Lowline, David Welch

Houston TX 832-347-3894 Lots 1, 2, 12

Walker Texas Ranch, John & Sandra Walker

Douglass TX 936-552-7933 Lot 57

Get Back to Grass

Lowline Sale and Field Day

Saturday, October 9, 2010

at the new sale facility at Pitchford Cattle Company, Athens, TX

Sale Day Phone:

Neil Effertz cell 701-471-0153
Pitchford Cattle Company Sale Facility 903-677-0664

Supplement Sheet:

Updated breeding information, photos and other data will be posted on a supplement sheet on our website: www.auctioneffertz.com.

Offering 61 Lots

- 13 Fullblood Females
- 31 Percentage Females
- 10 Fullblood Bulls
- 7 Percentage Bulls

Directions to sale site:

Pitchford Cattle Co. Sale Facility, 7150 County Rd 3715, Athens TX 75752: Take loop 7 to the north side of Athens. Go north on County Rd 3720 (at red hat rental) for 0.2 miles. Then turn left on 3718 and continue 0.2 mile SW. Turn right (north) on County Rd 3715 and go 1.3 miles (down through bottoms and up on the hill) to entrance of Pitchford Cattle Co. on your right. This sets in between Hwy 19 and Hwy 31 on the north side of town.

Headquarters Motel:

Best Western Royal Mountain Inn and Suites

1814 Texas Business • Athens TX • 903-292-1750

Request the *Get Back to Grass* rate of \$99 per night including hot breakfast.

Special Representatives:

Dean Pike, American Lowline Registry 303-810-7605
Brian Davis, Weekly Livestock Reporter 254-592-6608

Schedule of Events:

- 8:30 AM SLABA Lowline Field Day featuring speakers on Grass-Fed Beef Production, Beef Cattle Reproduction including AI and ET, and some leadership and marketing tips from Dean Pike, the ALR Director of Field Services.
- 11:00 AM SLABA Board Meeting
- 12 Noon Lowline BBQ Lunch, prepared by SLABA
- 1:00 PM Get Back to Grass Lowline Sale
- 4:00 PM Lowline Junior Show, judged by Alyssa Robertson, Sweeney, TX. Contact Larry Watkins (979-481-0951) to enter.

Registration Papers:

All of the sale cattle are registered with their respective breed association. Registration papers will be transferred to the buyer promptly after the sale at the seller's expense.

Trucking:

Auction Effertz, Ltd. will assist in making trucking arrangements.

Insurance:

Will be available at the settlement desk.

Can't Attend the Sale?

Watch and bid online:

Realttime bidding is available via the internet and live video will allow buyers to bid on animals just as if they were present at the sale. Buyer accounts must be created two days prior to the sale. Please visit www.liveauctions.tv to create an account, request a bidder number and familiarize yourself with the bidding procedure. If you have difficulty during the sale, please call 701-471-1053 or 701-471-0152.



Sponsored by:

Southwest Lowline Angus Breeders Association
Mark Roesler, President 713-805-5916
www.slaba.us



Sale Manager:

Auction Effertz, Ltd.

Your Market Masters • NEIL & JAN EFFERTZ
effertz@btinet.net • Cell: 701-471-0153
17350 Hwy. 1804 N. • Bismarck, ND 58503
Ph: 701-223-5202 • Fax: 701-223-5458
www.auctioneffertz.com

Frame Down and Power Up ... with Lowline Genetics

Use Lowline genetics for ease of calving on first-calf heifers, to reduce mature cow size while increasing muscle, carcass yield and quality. Perfect for forage based beef production systems.

Get-Back-To-Grass

1

Fairwyn's Rikki

Fullblood Cow

TATTOO	ALR REG #	% LOWLINE		
507R	FF 3531	FULLBLOOD		
BIRTHDATE	BW	205-DAY WT	COLOR	POLLED STATUS
4/15/05			BLACK	POLLED

Brackengrae Beau Lad
DCB Beau 3L
 Brambletye Agness II

Trangie M390
 Glen Innes M343
 TRA K162Brambletye Commander
 Glen Innes J306

Nevada N060
DCB Barbara
 Tainui Carmel P942

Brambletye Bosun L006
 Glen Innes J389
 Trangie K073
 Trangie F298

She is due for a fall calf by TL Remington FM4377, a TransAm son of Fairwyn's Lily, the Nevada daughter of Goldilocks. Excellent genetics in this young cow and her service sire.

TEXAS SPUR LOWLINE

3

BRR Prissy 38W

Fullblood Heifer

TATTOO	ALR REG #	% LOWLINE		
BRR 38W	FM 6063	FULLBLOOD		
BIRTHDATE	BW	205-DAY WT	COLOR	POLLED STATUS
2/7/09	36		BLACK	POLLED

Cal104 Apollo SCR 43J
Alta Buckwheat Bil 14R
 Cal 78 Altamay Bil 14K

Glen Fiddich Angus
 Casuarina Adeline TRA L223
 Kotinga Rocky
 Kotina Ginger

BJC Latin Lover 337L
DJC Prissy 411P
 BJC Moonshine 211M

BJC Jackson 020J
 BJC Innes 030H
 BJC Kaptain 237K
 C&C Sunshine 011K

She is AI bred to Mr. Rocking Brenton 42T FM6063 on September 1 and will be preg checked before the sale. Prissy has an outcross mostly Canadian pedigree on her topside bred to Karla's stout "Rocky" bull.

BAILEY-RITTER FARMS

4

KBW Audrey

Fullblood Cow

TATTOO	ALR REG #	% LOWLINE		
T003	FF5794	FULLBLOOD		
BIRTHDATE	BW	205-DAY WT	COLOR	POLLED STATUS
4/1/07			BLACK	POLLED

Midshipman M206
DCB Hank
 Brambletye Cracklin Rosie

Kaptain Planet K001
 Trangie C124
 Trangie J132
 Trangie J244

LTL Telluride
Aspen's Melody
 LTL Aspen

Eliza Park Brenton
 BR Mini Mouse
 Brackengrae Beau Lad
 TNT Dinky Die

She is AI bred to the 2009 Reserve National Champion, Spring Creek Ulysses FM7760 7/8/10. She is out of one of Kluding's best cows. She had a dandy Brick bull calf in 2009 and a solid Ulysses flush in June 2010. Audrey is young, very nice made, long sided and feminine and should have an exciting Ulysses calf.

K BAR W RANCHES LLC

5

Bar J Nadine 2M41-8U60

Bred Fullblood Heifer

TATTOO	ALR REG #	% LOWLINE		
8U60	FF9226	FULLBLOOD		
BIRTHDATE	BW	205-DAY WT	COLOR	POLLED STATUS
9/17/08			BLACK	POLLED

Rawhide R157
Buzz
 Brambletye Perfection II H002

Brambletye Commander VIII
 Glen Innes J306
 Trangie E004
 Brambletye Perfection F183

Brambletye Tequila
Bar J Nadine 9J33-2M41
 Bar J Nadine 9J33

Athanlee Herman
 Glen Innes J306
 Quartermaster Q117
 Bar J Nadine 7G7

This Buzz daughter is bred to Fairwyn's Torrey 701T FM6267, another great Trans Am son of Lily. Her dam is a full sister to the 2005 National Champion Female, Bar J Nadine 3N57.

SCHULZ FARM

2

Lena

Fullblood Bull Calf Pair

TATTOO	ALR REG #	% LOWLINE		
EC02	FF 2734	FULLBLOOD		
BIRTHDATE	BW	205-DAY WT	COLOR	POLLED STATUS
5/19/04			BLACK	POLLED

Brambletye Q117 Quartermaster
Bar J Quartermaster OK14
 Bar J Nell 7G2

Midshipman M206
 Trangie J167 Brambletye Felicity
 Glen Innes N323 Navigator
 Mugga Ellen E315

Brambletye Tequila
Twin Oaks Miss Elko
 ALM Windy

Athanlee Herman
 Glen Innes J306
 Brambletye Snotty
 Brambletye Geraldine II

She is pasture exposed to TL Remington FM4377 from June 12 - September 1, 2010. Lena is a very nice made, feminine granddaughter of Australian champions, Tequila and Quartermaster doing a wonderful job raising a long bodied well built bull calf.

Lot 2A: Fullblood bull calf born March 3 sired by Bar J Legacy 5R40 FM5708.

TEXAS SPUR LOWLINE



Lot 2 and 2A



Lot 4



Bar J Nadine 3N57, full sister to the dam of lot 3

6

Murrumbong RL Pinky *Fullblood Heifer*

TATTOO	ALR REG #	% LOWLINE		
82W	FF9166	FULLBLOOD		
BIRTHDATE	BW	205-DAY WT	COLOR	POLLED STATUS
2/19/09	44		BLACK	POLLED

Goan Wandoo II
Murrumbong LGL Bluey
 Goan Black Opal

Glen Innes N249
 Goan Wattle III
 Trangie M377
 Trangie L109

Bar J Ponderosa OK13
Bar J Miracle 7G9 2M 42
 Bar J Miracle 7G9

Nevada N060
 Bar J Nellie 7G1
 Brambletye Snotty P090
 Brambletye Geraldine II N071

Pinky is a maternal sister to the 2008 National Champion and Reserve National Champion female and is carrying the red factor! She is open and ready to breed or flush.

ROCKIN L LOWLINES



Murrumbong Bluey, red fullblood Lowline bull and sire of lots 5, 45 - 49.

7

PCF Onieda 2W *Bred Fullblood Cow*

TATTOO	ALR REG #	% LOWLINE		
PCF2W	FF8509	FULLBLOOD		
BIRTHDATE	BW	205-DAY WT	COLOR	POLLED STATUS
2/2/09	53		BLACK	POLLED

MA Brenton's Machismo
PCF Napoleon
 Sun Creek Ruby

Eliza Park Brenton
 Beaumont Matilda
 Trangie Knightcrawler
 Glenfiddich Jacquie Low Q02

Nevada N060
EZ Miss Olive 38L
 Brambletye Thundersong

Brambletye Bosun
 Glen Innes J389
 Brambletye Quartermaster Q117
 Brambletye Olive II M053

She is AI bred 6/18/10 to WMF Undercover FM8963, the Baxter son out of EZ Lady Jane, sexed heifer calf semen and is due to have a March heifer calf. She is a half sister to the 2010 Austin Star of Texas Grand Champion Cow.

PECAN CREEK FARM



PCF Tivo Lee, Grand Champion at the 2010 Austin Show, half sister to lot 7.

8

KBW Ariel *Bred Fullblood Heifer*

TATTOO	ALR REG #	% LOWLINE		
7W	FF9464	FULLBLOOD		
BIRTHDATE	BW	205-DAY WT	COLOR	POLLED STATUS
3/23/09			BLACK	POLLED

Kintyre Dundee
BCC Doc Holliday 04P
 Kintyre Melrose Abbey

Rouseabout M214
 Trangie J303
 Brambletye Bosun II
 Trangie K238

Colombo Park Zeffurelli
Double J's Miss 28T
 Miss Jet's Brenton 268K

Appertarra Randy
 Colombo Park Violetta
 Eliza Park Brenton N001
 Burra Opal

This level topped and ultra feminine Doc Holliday daughter is pasture exposed to MCR Findons Monarchy FM9340, from June 13 - August 15, 2010. With plenty of muscling and bone, Ariel's pedigree combines the beef powerhouses of Doc Holliday and Zeffirelli.

K BAR W RANCHES LLC



Lot 8



MCR Monarchy, 2010 National Calf Champion and service sire to lots 8, 9, 10 and 11.

9

KBW Penelope *Bred Fullblood Heifer*

TATTOO	ALR REG #	% LOWLINE		
8W	FF9465	FULLBLOOD		
BIRTHDATE	BW	205-DAY WT	COLOR	POLLED STATUS
3/24/09			BLACK	POLLED

Brackengrae Beau Lad
EZ Lisbon 29L
 EZ Olivia 15G

Beau Aaron M390
 Glen Innes M343
 Goan Messmate P012
 Glen Innes E361

Brambletye Admiral II L035
ALM Grace 123H
 Brambletye Geraldine II N071

Brambletye Admiral J222
 Glen Innes Geraldine J358
 Brambletye Admiral J222
 Glen Innes Geraldine J358

Penelope's dam is intensely line bred to some fantastic genetics. Her sire Lisbon is one of the top carcass bulls in the breed and she is pasture exposed to the great, MCR Findons Monarchy FM9340 from June 13 - Aug. 15. She is a deep bodied, easy fleshing Lisbon daughter with plenty of length. Her dam is an excellent, productive cow.

K BAR W RANCHES LLC



Lot 9

Get-Back-To-Grass

10

KBW Sydney

Bred Fullblood Heifer

TATTOO	ALR REG #	% LOWLINE		
10W	FF9467	FULLBLOOD		
BIRTHDATE	BW	205-DAY WT	COLOR	POLLED STATUS
3/27/09			BLACK	POLLED

Brackengrae Beau Lad
EZ Lisbon 29L
 EZ Olivia 15G

Beau Aaron M390
 Glen Innes M343
 Goan Messmate P012
 Glen Innes E361

Brambletye Admiral II L035
ALM Grace 123H
 Brambletye Geraldine II N071

Brambletye Admiral J222
 Glen Innes Geraldine J358
 Brambletye Admiral J222
 Glen Innes Geraldine J358

A full sister to Penelope(lot 9), Sydney should have a great potential show calf by "Mo" the 2010 National Calf Champion, MCR Findons Monarchy FM9340 She is pasture exposed from June 13 - August 15. This Lisbon daughter is a super example of clean, correct phenotype.

K BAR W RANCHES



Lot 10

11

KBW Scarlet

Bred Fullblood Heifer

TATTOO	ALR REG #	% LOWLINE		
9W	FF9466	FULLBLOOD		
BIRTHDATE	BW	205-DAY WT	COLOR	POLLED STATUS
3/26/09			BLACK	POLLED

Brackengrae Beau Lad
EZ Lisbon 29L
 EZ Olivia 15G

Beau Aaron
 Glen Innes M343
 Goan Messmate P012
 Glen Innes E361

Brambletye Admiral II L035
ALM Grace 123E
 Brambletye Geraldine II

Brambletye Admiral J222
 Glen Innes Geraldine
 Brambletye Admiral J222
 Glen Innes Geraldine J358

Scarlet is pasture exposed to MCR Findons Monarchy FM9340 from June 13 to August 15. Scarlet is another full flush sister to Penelope(lot 9) and Sydney (lot 10) by EZ Lisbon 29L, the carcass bull with the 19.62 REA. She is smaller framed with a pretty head and a flashy front end.

K BAR W RANCHES



Lot 11

12

TSL Welch's Roxy

Open Fullblood Heifer

TATTOO	ALR REG #	% LOWLINE		
TSL 6W	FF9982	FULLBLOOD		
BIRTHDATE	BW	205-DAY WT	COLOR	POLLED STATUS
7/11/09			BLACK	POLLED

Brambletye Transam
TL Remington
 Fairwyn's Lilly

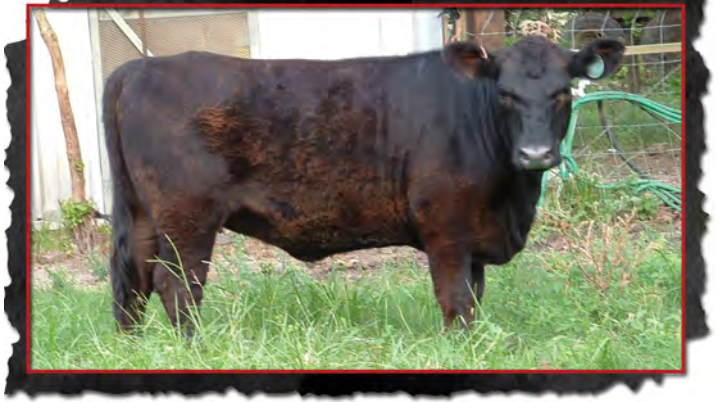
Athanlee Herman
 Glen Innes L503
 Nevada N060
 7L151 Goldilocks

LB Dusty 151L
MA Lil Maggie
 BR Maggie 1M

Brambletye Bosun's Mate N066
 ALM Bess 102H
 Bell Brae Boris Bel T008
 BR Mini Mouse 002H

Her sire is a full brother to Fairwyns Nami, the high selling female at the 2005 National Sale at \$33,000. Roxy is a DNA tested Red carrier!

TEXAS SPUR LOWLINE



Lot 12

13

RDM Miss Texas

Open Fullblood Heifer

TATTOO	ALR REG #	% LOWLINE		
23W RDM	FF10485	FULLBLOOD		
BIRTHDATE	BW	205-DAY WT	COLOR	POLLED STATUS
12/28/09	50		BLACK	POLLED

The Clan McFrith 2
Fairlawn Rebel
 The Clan McElle

Broken Arrow Kaptain Midnight
 Bell Brae Bon Bon
 The Clan McCallum
 The Clan Bruce McBetha

Vitulus Yes Yes Yes
JJC's Yes Ima Sensation
 Ms Rocking Brenton 259K

Santa Fe Maximillion
 Wyzenbeef Lady Waratah
 Eliza Park Brenton N001
 Glen Innes N221

Miss Texas is a paternal half sister to the current reigning National Champion Female by Fairlawn Rebel.

DANIELS SIWTCR CATTLE CO.



Fairlawn Rebel, the sire of lots 9 and 54.

14

Miss FJL Valencia 12 *3/4 Blood Bred Heifer*

TATTOO	ALR REG #	% LOWLINE		
EZ 303W	XF10001	75% LO, 12.5 AN, 12.5 MA		
BIRTHDATE	BW	205-DAY WT	COLOR	POLLED STATUS
4/4/09			BLACK	POLLED

ALM Dakota Pride
EZ Pride 304P
Miss Dakota Classic 001J

Nevada N060
Brambletye Morven L004
Midshipman M206
Angus Cow

ALM Clout 27H
EZ Miss Clout 390M
EZ Miss Quartermaster 135K

Brambletye Admiral J222
Brambletye Agness II
Brambletye Quartermaster Q117
Maine-Anjou Cow

Valencia is a very nice, long bodied, well bred, double 3/4 blood bred heifer that is pasture exposed to LTL Peyton for an early spring calf. She sells with 2 straws of semen from any Flying J & L bull and an AI cert. She is halter broke and has been shown successfully.

FLYING J & L RANCH



Lot 14

15

SJF Miss Blackiana *Purebred Bred Heifer*

TATTOO	ALR REG #	% LOWLINE		
SJF01U	PF7932	PUREBRED		
BIRTHDATE	BW	205-DAY WT	COLOR	POLLED STATUS
4/10/08			BLACK	POLLED

ALM Clout 27H
Sir Blackie
K.C.

Brambletye Admiral TRA J222
Brambletye Agness II M044
Quartermaster Q117
8K231

LB Dusty 151L 102H
CR Juliana
Bar J Caddie 9J12

Brambletye Bosun's Mate
ALM Bess 102H
Trangie M398 Cadet
Angus Cow

Blackiana is a bred purebred heifer that could be carrying the red color factor. She is bred to Black Beau PM7933, lot 52 and may have a purebred calf by sale day.

SHERJOY FARM

16

DS Lil' Kim *3/4 Blood Bred Heifer*

TATTOO	ALR REG #	% LOWLINE		
6W	XF8540	75% LO, 25% GV		
BIRTHDATE	BW	205-DAY WT	COLOR	POLLED STATUS
1/19/09			BLACK	POLLED

ABF Fitz S219
BCF Fitz Citadel
Sweetquila

Admiral Fitzroy N065
Brambletye Felicity 2A
Brambletye Tequila
Bar J Nellie 7G

Greg MLP 3G
PX 28N
Gelbvieh Cow

Palmdale Duke TRA K237
Mugga Callisto

She is pasture exposed to the Super Sonic son, DS Superstacked FM8096, lot 44, from May 1 - September 1, 2010.

MORGAN DAVIS

17

Rebel Leigh 201 *Purebred Heifer*

TATTOO	ALR REG #	% LOWLINE		
201W	PF10872	PUREBRED		
BIRTHDATE	BW	205-DAY WT	COLOR	POLLED STATUS
12/7/09			BLACK	POLLED

Quartermaster Q117
BJC Jackson 020J
BJC Agness 212G

Midshipman M206
Trangie J167
Goan Messmate P012
Glen Innes E361

EZ Magnum 72J
EZ Miss Magnum 342N
EZ Miss Captain 38J

Midshipman M206
Mugga Marnie K L290
Brambletye Captain III N063
Angus Cow

Stuart's open purebred heifer is very well balanced and put together right in every way. Her dam is a very well bred paternal sister to the 2006 National Champion Female and she has that same great look!

ROCKING LOWLINES



Lot 17

18

Ribbon *3/4 Blood Open Heifer*

TATTOO	ALR REG #	% LOWLINE		
56W	XF9667	75% LO, 25% AN		
BIRTHDATE	BW	205-DAY WT	COLOR	POLLED STATUS
7/20/09			BLACK	POLLED

Colombo Park Zeffirelli
RRR Colombo Park Zeferelli
Bar J Miracle 7G9 2M 42

Appertarra Randy
Colombo Park Violetta
Bar J Ponderosa 0K13
Bar J Miracle 7G9

Bar J Hosea 1L22
Rockin L Raquel
Angus

Brambletye Tequila
Bar J Nellie 7G1

Ben's Ribbon heifer is a sister to the "Brick", open and ready to breed this fall.

5E FARMS



LTL Peyton, service sire for lots 14 and 41, and sire of lot 42.

Get-Back-To-Grass

19

BRR Katherine 128X *3/4 Blood Open Heifer*

TATTOO	ALR REG #	% LOWLINE		
BRR 128X	PENDING	75% LO		
BIRTHDATE	BW	205-DAY WT	COLOR	POLLED STATUS
5/8/10	44		BLACK	POLLED

Cal104 Apollo SCR 43J
Alta Buckwheat Bil 14R
 Cal 78 Altamay Bil 14K

Glen Fiddich Angus
 Casuarina Adeline TRA L223
 Kotinga Rocky
 Kotina Ginger

Undetermined
BRR Molly 14R
 BJC Polly 430P

BJC Jackson 020J
 BJC Innes 030H

Here's a small framed, straight lined "Buckwheat" daughter who may be carrying some "extra" Lowline genetics for a 3/4 blood heifer.

BAILEY-RITTER FARMS



Lot 19

20

27X *3/4 Blood Open Heifer*

TATTOO	ALR REG #	% LOWLINE		
27X	PENDING	75% LO		
BIRTHDATE	BW	205-DAY WT	COLOR	POLLED STATUS
1/20/10			BLACK	POLLED

Texas
JJD Texas 11
 SC Shannon 123N

Trangie M214 Rouseabout
 Binnowie Super Sally ET
 Buzz
 LB Jill 107L

Mr. Dundee
Turkey Creek Tiki
 Commercial Cow

Binnowie Caesar TRA M455
 Trangie L113

Another Ben Edwards consignment, this open January heifer is by Texas II.

5E FARMS

21

36X *3/4 Blood Open Heifer*

TATTOO	ALR REG #	% LOWLINE		
36X	PENDING	75% LO, 25% AN		
BIRTHDATE	BW	205-DAY WT	COLOR	POLLED STATUS
3/29/10			BLACK	POLLED

Colombo Park Zeffirelli
RRR Colombo Park Zeferelli
 Bar J Miracle 7G9

Appertarra Randy
 Colombo Park Violetta
 Bar J Ponderosa OK 13
 Bar J Miracle 7G9

Fairwyn's Machine
Two Rivers Lana
 Angus

Brambletye Tequila
 Brambletye Fairwyn's Natesa

This March heifer calf is sired by a brother to the 2008 National Champion Female.

5E FARMS

22

35X *3/4 Blood Open Heifer*

TATTOO	ALR REG #	% LOWLINE		
35X	PENDING	75 LO, 25% AN		
BIRTHDATE	BW	205-DAY WT	COLOR	POLLED STATUS
4/10/10			BLACK	POLLED

Colombo Park Zeffirelli
RRR Colombo Park Zeferelli
 Bar J Miracle 7G9

Appertarra Randy
 Colombo Park Violetta
 Bar J Ponderosa OK 13
 Bar J Miracle 7G9

Fairwyn's Machine
Two Rivers Sparkle
 Angus

Brambletye Tequila
 Brambletye Fairwyn's Natesa

Another fancy April heifer that combines the widely popular Zeffirelli and Machine bloodlines.

5E FARMS

23

31X *3/4 Blood Open Heifer*

TATTOO	ALR REG #	% LOWLINE		
31X	PENDING	75% LO, 25% AN		
BIRTHDATE	BW	205-DAY WT	COLOR	POLLED STATUS
4/12/10			BLACK	POLLED

Colombo Park Zeffirelli
RRR Colombo Park Zeferelli
 Bar J Miracle 7G9

Appertarra Randy
 Colombo Park Violetta
 Bar J Ponderosa OK 13
 Bar J Miracle 7G9

Fairwyn's Machine
Two Rivers Camille
 Angus

Brambletye Tequila
 Brambletye Fairwyn's Natesa

Here's a 3/4 sister to Lot 22 with a great pedigree.

5E FARMS



Halfblood Lowline cows, the best kept secret in the beef business.
 Super efficient, easy fleshing, breed her any way you want.

24

Sunrise BSL 76 *Halfblood Bred Heifer*

TATTOO	ALR REG #	% LOWLINE		
BSL 76	XF7012	50% LO		
BIRTHDATE	BW	205-DAY WT	COLOR	POLLED STATUS
2/8/07			BLACK	POLLED

BJC Jackson 020J
BJC Latin Lover 337L
 BJC Innes 030H

Quartermaster Q117
 BJC Agnes 212G
 Brambletye Admiral TRA J222
 Glen Innes J306

Angus Cow

Pasture exposed to BJC Navaro FM1793 since June 10, 2010.

STAFFORD & ASSOCIATES, INC.



Moderate framed beef cows, above average size for Lowlines, Lots 24 - 37 are 14 half sister halfblood cows, bred for ¼ Lowline calves. Several will have ¼ Lowline heifer calves at side. Go to the supplement sheet at www.auctioneffertz.com for updated information.

25

Sunrise BSL 81 *Halfblood Bred Cow*

TATTOO	ALR REG #	% LOWLINE		
BSL 81	XF7017	50% LO, 50% AN		
BIRTHDATE	BW	205-DAY WT	COLOR	POLLED STATUS
2/12/07			BLACK	POLLED

BJC Jackson 020J
BJC Latin Lover 337L
 BJC Innes 030H

Quartermaster Q117
 BJC Agnes 212G
 Brambletye Admiral TRA J222
 Glen Innes J306

Angus Cow

Pasture exposed to BJC Navaro FM1793 since June 10, 2010.

STAFFORD & ASSOCIATES, INC.

26

Sunrise BSL 82 *Halfblood Bred Cow*

TATTOO	ALR REG #	% LOWLINE		
BSL 82	XF7018	50% LO, 50% AN		
BIRTHDATE	BW	205-DAY WT	COLOR	POLLED STATUS
2/13/07			BLACK	POLLED

BJC Jackson 020J
BJC Latin Lover 337L
 BJC Innes 030H

Quartermaster Q117
 BJC Agnes 212G
 Brambletye Admiral TRA J222
 Glen Innes J306

Angus Cow

Pasture exposed to BJC Navaro FM1793 since June 10, 2010.

STAFFORD & ASSOCIATES, INC.

27

Sunrise BSL 86 *Halfblood Bred Cow*

TATTOO	ALR REG #	% LOWLINE		
BSL 86	XF7022	50% LO, 50% AN		
BIRTHDATE	BW	205-DAY WT	COLOR	POLLED STATUS
2/13/07			BLACK	POLLED

BJC Jackson 020J
BJC Latin Lover 337L
 BJC Innes 030H

Quartermaster Q117
 BJC Agnes 212G
 Brambletye Admiral TRA J222
 Glen Innes J306

Angus Cow

Pasture exposed to BJC Navaro FM1793 since June 10, 2010.

STAFFORD & ASSOCIATES, INC.

28

Sunrise BSL 87 *Halfblood Bred Cow*

TATTOO	ALR REG #	% LOWLINE		
BSL 87	XF7023	50% LO, 50% AN		
BIRTHDATE	BW	205-DAY WT	COLOR	POLLED STATUS
2/15/07			BLACK	POLLED

BJC Jackson 020J
BJC Latin Lover 337L
 BJC Innes 030H

Quartermaster Q117
 BJC Agnes 212G
 Brambletye Admiral TRA J222
 Glen Innes J306

Angus Cow

Pasture exposed to BJC Navaro FM1793 since June 10, 2010.

STAFFORD & ASSOCIATES, INC.

29

Sunrise BSL 85 *Halfblood Bred Cow*

TATTOO	ALR REG #	% LOWLINE		
BSL 85	XF7021	50% LO, 50% AN		
BIRTHDATE	BW	205-DAY WT	COLOR	POLLED STATUS
2/16/07			BLACK	POLLED

BJC Jackson 020J
BJC Latin Lover 337L
 BJC Innes 030H

Quartermaster Q117
 BJC Agnes 212G
 Brambletye Admiral TRA J222
 Glen Innes J306

Angus Cow

Pasture exposed to BJC Navaro FM1793 since June 10, 2010.

STAFFORD & ASSOCIATES, INC.

30

Sunrise BSL 88 *Halfblood Bred Cow*

TATTOO	ALR REG #	% LOWLINE		
BSL 88	XF7024	50% LO, 50% AN		
BIRTHDATE	BW	205-DAY WT	COLOR	POLLED STATUS
2/26/07			BLACK	POLLED

BJC Jackson 020J
BJC Latin Lover 337L
 BJC Innes 030H

Quartermaster Q117
 BJC Agnes 212G
 Brambletye Admiral TRA J222
 Glen Innes J306

Angus Cow

Pasture exposed to BJC Navaro FM1793 since June 10, 2010.

STAFFORD & ASSOCIATES, INC.

Get-Back-To-Grass

31

Sunrise BSL 79

Halfblood Bred Cow

TATTOO	ALR REG #	% LOWLINE		
BSL 79	XF7015	50% LO, 50% AN		
BIRTHDATE	BW	205-DAY WT	COLOR	POLLED STATUS
3/1/07			BLACK	POLLED

BJC Jackson 020J
BJC Latin Lover 337L
 BJC Innes 030H

Quartermaster Q117
 BJC Agnes 212G
 Brambletye Admiral TRA J222
 Glen Innes J306

Angus Cow

Pasture exposed to BJC Navarro FM1793 since June 10, 2010.

STAFFORD & ASSOCIATES, INC.



Moderate framed beef cows, above average size for Lowlines, Lots 24 - 37 are 14 half sister halfblood cows, bred for 3/4 Lowline calves. Several will have 3/4 Lowline heifer calves at side. Go to the supplement sheet at www.auctioneffertz.com for updated information.

32

Sunrise BSL 80

Halfblood Bred Cow

TATTOO	ALR REG #	% LOWLINE		
BSL 80	XF7016	50% LO, 50% AN		
BIRTHDATE	BW	205-DAY WT	COLOR	POLLED STATUS
3/2/07			BLACK	POLLED

BJC Jackson 020J
BJC Latin Lover 337L
 BJC Innes 030H

Quartermaster Q117
 BJC Agnes 212G
 Brambletye Admiral TRA J222
 Glen Innes J306

Angus Cow

Pasture exposed to BJC Navarro FM1793 since June 10, 2010.

STAFFORD & ASSOCIATES, INC.

33

Sunrise BSL 90

Halfblood Bred Cow

TATTOO	ALR REG #	% LOWLINE		
BSL 90	XF7026	50% LO, 50% AN		
BIRTHDATE	BW	205-DAY WT	COLOR	POLLED STATUS
3/4/07			BLACK	POLLED

BJC Jackson 020J
BJC Latin Lover 337L
 BJC Innes 030H

Quartermaster Q117
 BJC Agnes 212G
 Brambletye Admiral TRA J222
 Glen Innes J306

Angus Cow

Pasture exposed to BJC Navarro FM1793 since June 10, 2010.

STAFFORD & ASSOCIATES, INC.

34

Sunrise BSL 92

Halfblood Bred Cow

TATTOO	ALR REG #	% LOWLINE		
BSL 92	XF7028	50% LO, 50% AN		
BIRTHDATE	BW	205-DAY WT	COLOR	POLLED STATUS
3/10/07			BLACK	POLLED

BJC Jackson 020J
BJC Latin Lover 337L
 BJC Innes 030H

Quartermaster Q117
 BJC Agnes 212G
 Brambletye Admiral TRA J222
 Glen Innes J306

Angus Cow

Pasture exposed to BJC Navarro FM1793 since June 10, 2010.

STAFFORD & ASSOCIATES, INC.

35

Sunrise BSL 91

Halfblood Bred Cow

TATTOO	ALR REG #	% LOWLINE		
BSL 91	XF7027	50% LO, 50% AN		
BIRTHDATE	BW	205-DAY WT	COLOR	POLLED STATUS
3/16/07			BLACK	POLLED

BJC Jackson 020J
BJC Latin Lover 337L
 BJC Innes 030H

Quartermaster Q117
 BJC Agnes 212G
 Brambletye Admiral TRA J222
 Glen Innes J306

Angus Cow

Pasture exposed to BJC Navarro FM1793 since June 10, 2010.

STAFFORD & ASSOCIATES, INC.

36

Sunrise BSL 83

Halfblood Bred Cow

TATTOO	ALR REG #	% LOWLINE		
BSL 83	XF7019	50% LO, 50% AN		
BIRTHDATE	BW	205-DAY WT	COLOR	POLLED STATUS
3/21/07			BLACK	POLLED

BJC Jackson 020J
BJC Latin Lover 337L
 BJC Innes 030H

Quartermaster Q117
 BJC Agnes 212G
 Brambletye Admiral TRA J222
 Glen Innes J306

Angus Cow

Pasture exposed to BJC Navarro FM1793 since June 10, 2010.

STAFFORD & ASSOCIATES, INC.

37

Sunrise BSL 78

Halfblood Bred Cow

TATTOO	ALR REG #	% LOWLINE		
BSL 78	XF7014	50% LO, 50% AN		
BIRTHDATE	BW	205-DAY WT	COLOR	POLLED STATUS
3/22/07			BLACK	POLLED

BJC Jackson 020J
BJC Latin Lover 337L
 BJC Innes 030H

Quartermaster Q117
 BJC Agnes 212G
 Brambletye Admiral TRA J222
 Glen Innes J306

Angus Cow

Pasture exposed to BJC Navarro FM1793 since June 10, 2010.

STAFFORD & ASSOCIATES, INC.

38

BRR Molly *Halfblood Cow/3/4 Blood Calf*

TATTOO	ALR REG #	% LOWLINE			
BRR 430T	XF 7357	50% LO			
BIRTHDATE	BW	205-DAY WT	COLOR	POLLED STATUS	
11/30/07			BLACK	POLLED	

Undetermined

BJC Jackson 020J
BJC Polly 430P
 BJC Innes 030H

Quartermaster Q117
 BJC Agnes 212G
 Brambletye Admiral TRA J222
 Glen Innes GI J306

Molly is probably a fullblood Lowline but this can not be confirmed by a DNA test, so she is registered as a halfblood as her dam is a registered fullblood female. Her heifer calf will be registered as a 3/4 blood. She is pasture exposed to the great Nevada son of Santa Fe, Dynamo M1 FM1725 from June 3 to July 14th, 2010.

Lot 38A: 3/4 heifer calf BRR128X born May 8, sired by ALTA Buckwheat 14R. **BAILEY-RITTER FARMS**



Dynamo, Sire of Lots 39 and 40

39

White D1 80W *Halfblood Bred Heifer*

TATTOO	ALR REG #	% LOWLINE			
BRR 80W	PENDING	50% LO			
BIRTHDATE	BW	205-DAY WT	COLOR	POLLED STATUS	
3/10/09			WHITE		

Nevada N060
JGH Dynamo M4
 Brambletye Santa Fe

Brambletye Bosun 006
 Glen Innes J389
 Brambletye Admiral TRA J222
 Brambletye Tara

Commercial Charolais

This halfblood silver colored bred heifer has a golden future. She is a daughter of the Reserve Champion at both the 2004 American Royal and Denver. She sells pasture exposed from June 2 to sale time to Savanna Pluto XM9242, Lot 59, the halfblood "Buckwheat" son for a halfblood calf.

BAILEY-RITTER FARMS

40

White D2 85W *Halfblood Bred Heifer*

TATTOO	ALR REG #	% LOWLINE			
RRR 85W	PENDING	50% LO			
BIRTHDATE	BW	205-DAY WT	COLOR	POLLED STATUS	
3/15/09	65		WHITE		

Nevada N060
JGH Dynamo M4
 Brambletye Santa Fe

Brambletye Bosun 006
 Glen Innes J389
 Brambletye Admiral TRA J222
 Brambletye Tara

Commercial Charolais

A half sister to Lot 39 by the Denver Champion Dynamo. These halfblood Lowline x Charolais make great beef cows, easy fleshing and meaty with terrific carcass genetics. She sells pasture exposed from June 2 to sale time to Savanna Pluto XM9242 the halfblood "Buckwheat" son for a halfblood calf.

BAILEY-RITTER FARMS

41

Miss FJL Ayita 05 *Halfblood Star 5 Heifer*

TATTOO	ALR REG #	% LOWLINE			
FJL U05	XF8038	50% LO, 50% SG			
BIRTHDATE	BW	205-DAY WT	COLOR	POLLED STATUS	
11/15/08	58		BLACK	POLLED	

EZ Sherman 24J
EZ Nova 20N
 Little One LRL 88H

Brambletye Arunta
 Mugga Fidelity
 Brambletye Snotty
 Brambletye Little One IV

Wendt 6468
CA590 Santa Gertrudis
 Miss D Bar J 807

Dandy 4881
 93/5
 D Bar J Ranch Gamber
 Miss D Bar J 015

Here's a great opportunity to put the best genetics of two breeds together in this double registered heifer. This great bred heifer is 50% Lowline and 50% Star 5 from the well known and highly respected Wendt breeding in the Santa Gertrudis business. She is one of the top two Lowline x Star 5 heifers we have ever raised. Her dam was chosen as one of the top heifers in the 2008 SGBI National Sale in Ft. Worth. She carries the red gene She is pasture exposed to LTL Peyton FM5315 from May 1 - July 19.

FLYING J & L RANCH



EZ Nova 20N, sire of Lot 41

42

Miss FJL Primrose 16 *Halfblood Open Heifer*

TATTOO	ALR REG #	% LOWLINE			
FJLX5	PENDING	50% LO, 50% AN			
BIRTHDATE	BW	205-DAY WT	COLOR	POLLED STATUS	
2/6/10	54	498	BLACK	POLLED	

LTL Dillon
LTL Peyton
 Miss Jet's Raphael 258K

Nevada N060
 Bar J Nellie 7G1
 Duneira Paphael
 Duneira Rachel

EXAR New Look 2971
Ms Cooley Party Pride (Reg. Angus)
 Miss CCR T510 362L2

Bon View New Design 1407
 N Bar Primrose 2424
 SS Traveler 6807 T510
 Posta Pride of Conanga

She is a fancy February show heifer prospect. She's a Peyton daughter tracing on the topside to the National Champion Dillon. Her dam was bred by Camp Cooley Ranch.

FLYING J & L RANCH



Lot 42

Get-Back-To-Grass

43

Miss FJL Trouble Too *Halfblood Star 5 Heifer*

TATTOO	ALR REG #	% LOWLINE		
62P	PENDIING	50% LO		
BIRTHDATE	BW	205-DAY WT	COLOR	POLLED STATUS
3/17/10	52	437	BLACK	POLLED

EZ Durbin 69J
EZ Premier 62P
 JMF Josephone 85H

Booger Red
Boogers Redbird (Santa Gertrudis)
 Van's Marsha

Brambletye Arunta
 Glen Innes N361
 Brambletye Admiral TRA J222
 Brambletye Bronwyn

Five S Benji
 Christina
 Commander
 96/241

Miss Trouble Too is a long, straight feminine registered Star 5 heifer, carrying the red gene. We think she'll show! She will be halter broke and sells with two straws and certificate from any Flying J & L bull.

FLYING J & L RANCH



Lot 43

44

Ms Cooley Schurshot 6601U4 *Charolais Cow*

TATTOO	ALR REG #	% LOWLINE		
6601U4	EF1084705	CHAROLAIS		
BIRTHDATE	BW	205-DAY WT	COLOR	POLLED STATUS
2/12/08	80	506	WHITE	POLLED

Schurrtop 5627
CCR Schurshot 1107F7 PET
 WCR Miss Perfection 1107

CCR Jackpot 1410K5 PET
Ms Cooley Jpot 6601P ET
 Eatons Cadet 0661

WCR Sire Duke 783
 Miss Sugar Valley 908
 HCR Perfection 5142 Poll
 WCR Miss Mac IV 8501

WCR Prime Cut 764 Pld
 Ms CCR W Wind 1401G PET
 Eatons Beyond 7243
 Eatons Miss Cadet 6590

Here's a registered Camp Cooley Charolais female bred to a terrific Lexus son. She pasture exposed the EZ Sabre 12S FM9828 from April 10 - July 24. Her calf last year weighed 55# at birth and weaned at 525#, 589# adj.

FLYING J & L RANCH



Lot 44

45

EZ Undercover Agent 10U *Fullblood Bull*

TATTOO	ALR REG #	% LOWLINE		
EZ 10U	FM7550	FULLBLOOD		
BIRTHDATE	BW	205-DAY WT	COLOR	POLLED STATUS
4/30/08	48		BLACK	POLLED

Brackengrae Beau Lad
EZ Lisbon 29L
 EZ Olivia 15G

Brambletye Arunta L013
EZ Fantasia 20J
 Mugga Fidelity F338

Trangie M390 Beau Aaron
 Glen Innes M343
 Goan Messmate P012
 Glen Innes E361

Trangie J038
 Trangie J117
 Trangie C203
 Trangie C094

Undercover Agent 10U is a super stout made son of the carcass leader Lisbon 29L out of the National Champion Female, Fantasia 20J. He is big topped, very quiet dispositioned and should make a great herd sire for any carcass conscious breeding herd.

FLYING J & L RANCH



Lot 45

46

KBW Xerxes *Fullblood Bull*

TATTOO	ALR REG #	% LOWLINE		
2U	FM8386	FULLBLOOD		
BIRTHDATE	BW	205-DAY WT	COLOR	POLLED STATUS
9/1/08			BLACK	POLLED

Brackengrae Beau Lad
EZ Lisbon 29L
 EZ Olivia 15G

LTL Telluride
Aspen's Melody
 LTL Aspen

Trangie 390 Beau Aaron
 Glen Innes M343
 Goan Messmate P012
 Glen Innes E361

Eliza Park Brenton N001
 BR Mini Mouse 002H
 Brackengrae Beau Lad
 TNT Dinky Die

He is a Lisbon son out of our fantastic Melody cow. He is long and powerful but flexible and moves out well in the pasture. He is taller than average. We are retaining a one fourth semen interest in this fine bull.

K BAR W RANCHES



Lot 46

47

LS Commander Jack 112T *Fullblood Bull*

TATTOO	ALR REG #	% LOWLINE		
LS112T	FM6691	FULLBLOOD		
BIRTHDATE	BW	205-DAY WT	COLOR	POLLED STATUS
3/2/07			BLACK	POLLED

Quartermaster Q117
BJC Jackson 020J
 BJC Agnes 212G

Midshipman M206
 Trangie J167
 Goan Messmate P012
 Glen Innes E361

Brambletye Commander Bligh
BJC Kahlua 092K
 BJC Innes 030H

Brambletye Commander
 Brambletye Felicity J167
 Brambletye Admiral J222
 Glen Innes J306

Commander Jack is a modest framed three year old Jackson son ready for service.

ROCKING L LOWLINES

48

DS Super Stacked *Fullblood Bull*

TATTOO	ALR REG #	% LOWLINE		
7V	FM8096	FULLBLOOD		
BIRTHDATE	BW	205-DAY WT	COLOR	POLLED STATUS
1/19/09			BLACK	POLLED

Dakota
Mr Dakota 602S
 Bonanzas's Lexi 302N

Glen Innes N323 Navigator
 Brambletye Geraldine III
 Bonanza's Brenton 02L
 BHR Lexi

Eliza Park Brenton
Ms Brentons Babe 20S
 Miss Jet's Admiral 03H

Brambletye Bosun L006
 GI J369 Brambletye Suzannah
 Brambletye Admiral II L035
 Brambletye Tara III

Here's a nice made son of the Denver champion Super Sonic, well bred on the bottom side to Brenton and an Admiral II daughter of the great Tara cow family.

MORGAN DAVIS

49

9W *Fullblood Bull*

TATTOO	ALR REG #	% LOWLINE		
9W	FM9163	FULLBLOOD		
BIRTHDATE	BW	205-DAY WT	COLOR	POLLED STATUS
12/30/08	51		BLACK	POLLED

Goan Wandoo II
Murrumbong LGL Bluey
 Goan Black Opal

Glen Innes N249
 Goan Wattle III
 Trangie M377
 Trangie L109

Bar J Ponderosa OK13
Bar J Miracle 7G9 2M 42
 Bar J Miracle 7G9

Nevada N060
 Bar J Nellie 7G1
 Brambletye Snotty P090
 Brambletye Geraldine II N071

The oldest of five Bluey sons in the sale out of the dam of the 2008 National Champion Female.

ROCKING L LOWLINES

50

12W *Fullblood Bull*

TATTOO	ALR REG #	% LOWLINE		
12W	FM9164	FULLBLOOD		
BIRTHDATE	BW	205-DAY WT	COLOR	POLLED STATUS
2/18/09	55		BLACK	POLLED

Goan Wandoo II
Murrumbong LGL Bluey
 Goan Black Opal

Glen Innes N249
 Goan Wattle III
 Trangie M377
 Trangie L109

EZ Kiowa 07K
Sharidon's April
 Ms Rocking Brenton 253K

Quartermaster Q117
 EZ Matilda 06G
 Eliza Park Brenton N001
 Glen Innes N146

A February Bluey son carrying the red factor and out of Sharidon's April cow.

ROCKING L LOWLINES

51

9W *Fullblood Bull*

TATTOO	ALR REG #	% LOWLINE		
81W	FM9165	FULLBLOOD		
BIRTHDATE	BW	205-DAY WT	COLOR	POLLED STATUS
2/18/09	49		BLACK	POLLED

Goan Wandoo II
Murrumbong LGL Bluey
 Goan Black Opal

Glen Innes N249
 Goan Wattle III
 Trangie M377
 Trangie L109

Bar J Ponderosa OK13
Bar J Miracle 7G9 2M 42
 Bar J Miracle 7G9

Nevada N060
 Bar J Nellie 7G1
 Brambletye Snotty P090
 Brambletye Geraldine II N071

Another February Bluey son of the Bar J Miracle cow, long and beefy, off grass.

ROCKING L LOWLINES

52

16W *Fullblood Bull*

TATTOO	ALR REG #	% LOWLINE		
16W	FM9160	FULLBLOOD		
BIRTHDATE	BW	205-DAY WT	COLOR	POLLED STATUS
3/10/09	49		BLACK	POLLED

Goan Wandoo II
Murrumbong LGL Bluey
 Goan Black Opal

Glen Innes N249
 Goan Wattle III
 Trangie M377
 Trangie L109

Bar J Ponderosa OK13
Bar J Miracle 7G9 2M 42
 Bar J Miracle 7G9

Nevada N060
 Bar J Nellie 7G1
 Brambletye Snotty P090
 Brambletye Geraldine II N071

One of two March flush mates carrying the red factor by Bluey and Miracle.

ROCKING L LOWLINES

53

50W *Fullblood Bull*

TATTOO	ALR REG #	% LOWLINE		
50W	FM9161	FULLBLOOD		
BIRTHDATE	BW	205-DAY WT	COLOR	POLLED STATUS
3/14/09	45		BLACK	POLLED

Goan Wandoo II
Murrumbong LGL Bluey
 Goan Black Opal

Glen Innes N249
 Goan Wattle III
 Trangie M377
 Trangie L109

Bar J Ponderosa OK13
Bar J Miracle 7G9 2M 42
 Bar J Miracle 7G9

Nevada N060
 Bar J Nellie 7G1
 Brambletye Snotty P090
 Brambletye Geraldine II N071

The other of two March flush mates carrying the red factor by Bluey and Miracle, the dam of the 2008 National Champion.

ROCKING L LOWLINES

54

RDM Megamark *Fullblood Bull*

TATTOO	ALR REG #	% LOWLINE		
24X	FM10669	FULLBLOOD		
BIRTHDATE	BW	205-DAY WT	COLOR	POLLED STATUS
1/4/10	54		BLACK	POLLED

The Clan McFrith 2
Fairlawn Rebel
 The Clan McElle

Broken Arrow Kaptain Midnight
 Bell Brae Bon Bon
 The Clan McCallum
 The Clan Bruce McBetha

Vitulus Yes Yes Yes
JJC's Yes Ima Sensation
 Ms Rocking Brenton 259K

Santa Fe Maximillion
 Wyzenbeef Lady Waratah
 Eliza Park Brenton N001
 Glen Innes N221

Megamark is a young January Rebel son making him a paternal brother to the 2010 National Champion Female. His dam is a paternal sister to the 2008 National Champion Female.

DANIELS SWITCH CATTLE CO.

Get-Back-To-Grass

55

DS Gustov

Purebred Bull

TATTOO	ALR REG #	% LOWLINE		
10U	PM7486	PUREBRED		
BIRTHDATE	BW	205-DAY WT	COLOR	POLLED STATUS
9/4/08	41		BLACK	POLLED

LB Wyatt 154L 116H
PX 285
 PX 28N

Quartermaster Q117
 ALM Polly 116H
 Greg MLP 3G
 Gelbvieh Cow

Bell Brae Boris Bel T008
Ms Boris's Jet 21S
 Miss Jet's Admiral 03H

Kaptain Midnight
 Trangie K004
 Admiral II L035
 Brambletye Tara III P106

Gustov is a good looking yearling purebred bull whose dam is a fullblood that was bred to a ¼ son of Wyatt. His length, muscling and balance is impressive.

DANIELS SWITCH CATTLE CO.



Lot 55

56

SJF Black Beau

Purebred Bull

TATTOO	ALR REG #	% LOWLINE		
SJF02U	PM7933	PUREBRED		
BIRTHDATE	BW	205-DAY WT	COLOR	POLLED STATUS
5/31/08			BLACK	POLLED

LB Dusty 151L 102H
MA Black Gold
 LB Ginger 104L

Brambletye Bosun's Mate
 ALM Bess 102H
 Midshipman M206
 ALM Bess 102H

EZ Norman 01N
BBQ Sweet Cakes
 VF Mary 4N

Brackengrae Beau Lad
 Brambletye Sante fe
 EZ Sherman 24J
 VF Blackberry 101

Black Beau is a May two year old purebred that could be carrying the red factor. The DNA results for color will be available sale day.

SHERJOY FARM

57

Red Dusty

Purebred Bull

TATTOO	ALR REG #	% LOWLINE		
CR W11	PM9059	PUREBRED		
BIRTHDATE	BW	205-DAY WT	COLOR	POLLED STATUS
1/2/09			RED	POLLED

Brambletye Bosun's Mate
LB Dusty 151L 102H
 ALM Bess 102H

Brambletye Bosun L006
 LI L503 Brambletye September
 Brambletye Admiral J222
 Brambletye Tara

LB Dusty 151L 102H
CR Valentina Manso
 CR Valentina

Brambletye Bosun's Mate
 ALM Bess 102H
 Mr. Dundee
 Brahman cow

Red Dusty could be the first red purebred bos indicus based Lowline bull to ever sell a public auction! He is a red brindle of breeding age and ready to cover the cows or heifers!

WALKER TEXAS RANCH

Lot 57



58

Eric 1U

3/4 Blood Bull

TATTOO	ALR REG #	% LOWLINE		
KKG 1U	XM8094	75% LO		
BIRTHDATE	BW	205-DAY WT	COLOR	POLLED STATUS
9/18/08	46		BLACK	POLLED

Midshipman M206
Quartermaster Q117
 Brambletye Felicity J167

Kaptain Planet K001
 Trangie C124
 Trangie F026
 Trangie Y189

Brambletye Utah
SLA Lady Erica P413
 Angus Cow

Nevada N060
 Brambletye Bronwyn II MO

Eric is a tremendously long bodied breeding age ¾ blood bull that has a great pedigree and all the inside components to bring quality end products to the table. -3.2 on Pfizer Genestar Feed Efficiency, -1.5 on Tenderness, 12.02 on quality grade.

DOUBLE K ADVENTURES

59

Savanna's Pluto

Halfblood Bull

TATTOO	ALR REG #	% LOWLINE		
BRR 314U	XM9242	50% LO, 50% AN		
BIRTHDATE	BW	205-DAY WT	COLOR	POLLED STATUS
11/14/08	61		BLACK	POLLED

Cal 104 Apollo SCR 43J
Alta Buckwheat Bil 14R
 Cal 78 Alta May Bil 14K

Glenfiddich Angus
 Casuarina Adeline L223
 Kotinga Rocky
 Kotinga Ginger

Angus Cow

Pluto is a halfblood "Buckwheat" son out of a moderate framed Angus cow who was a twin heifer. His dam has produced several sets of twins.

BAILEY-RITTER FARMS



Lot 58



Lot 59

60

MR FJL Diablo 11 W01 *Halfblood Bull*

TATTOO	ALR REG #	% LOWLINE		
FJLW1	XM10000	50% LO		
BIRTHDATE	BW	205-DAY WT	COLOR	POLLED STATUS
3/8/09	53	470	BLACK	POLLED

BR Absolut 1L
JJ Bruzer 15
 Polled Shorthorn Cow

Bell Brae Boris Bel T008
 BR Bobbi Jo 004H

Quartermaster Q117
PX 20L
 Gelbvieh Cow

Midshipman M206
 Trangie J167

Diablo shows his Shorthorn influence from his sire JJ Bruzer the 2008 National Champion percentage bull

FLYING J & L RANCH



Lot 60

61

Mr FJL Massive 13 *Halfblood Bull*

TATTOO	ALR REG #	% LOWLINE		
FJLW5	PENDING	50% LO		
BIRTHDATE	BW	205-DAY WT	COLOR	POLLED STATUS
9/14/09	73		RED	POLLED

Goan Wandoo II
Murrumbong LGL Bluey
 Goan Black Opal

Glen Innes N249
 Goan Wattle III
 Trangie M377
 Trangie L109

Santa Gertrudis Cow

Massive is a red halfblood Lowline bull, double recorded Star 5 with Santa Gertrudis Breeders International. Actual weaning weight @ 186 days was 425#, adjusted 205 460#. He has hit a real growth spurt lately.

FLYING J & L RANCH



Lot 61

Terms and Conditions

Terms: Terms of the sale are cash or check payable immediately upon conclusion of the sale and before animals will be moved. Seller will reserve the right to require a certified check as settlement before releasing any cattle.

Insurance of Purchases and Risk: All animals are the seller's risk prior to their sale and become property of the buyer as soon as declared sold by the auctioneer. Arrangements will be made to have insurance available when making settlement.

Bidding: All animals sell to the highest bidder. Any disputes or challenges regarding bids will be settled by the auctioneer and his decision will be final.

Health and Export: A vet will be on hand to write interstate health certificates.

Registration and Transfer: All animals sell with registration papers from their respective breed Association and will be transferred after the sale at the seller's expense. In the case of dual registered cattle, both registration papers will be transferred.

Announcements: Any errors or changes of information contained in the catalog will be announced from the auction block and such announcements shall take precedence over information contained in the catalog.

Breeding Guarantee: Every effort will be made to make the most up-to-date information regarding pregnancy check available to the buyers.

Lowline bred females in the sale have been pregnancy examined by a veterinarian and found to be safe in calf. The open heifers selling are guaranteed to be breeders. If a female appears to be a non-breeder within 6 months of the sale (or within 6 months of when she reaches breeding age) she may be returned to the seller at the buyer's expense. The seller will then reserve the right to prove the animal a breeder within a six month period, using any fullblood registered Lowline bull of his choice through AI or natural service. If successful, seller will

return animal to buyer, again at buyer's expense. Should the animal fail to prove a breeder, the seller at his option may either return the purchase price to the buyer or replace the animal with another of equal value in full settlement and satisfaction of all claims. In no event shall the seller be responsible for more than the purchase price.

In case the animal in question should develop to be a problem breeder due to negligence or improper management by the buyer or if the female has been subjected to any hormonal or surgical reproduction techniques, the seller's guarantee does not apply. No guarantee is given that bred females will deliver a live calf. No guarantee is given that a female will produce eggs suitable for transplant.

Liabilities: All persons who attend the sale do so at their own risk and Auction Effertz, Ltd. and SLABA and the sale consignors assume no liability for any accidents that may occur. Neither does Auction Effertz, Ltd. or SLABA and the sale consignors assume any liability for loss or injury to livestock due to theft, mysterious disappearance, sickness, improper handling or Act of God. It is also to be clearly understood that Auction Effertz, Ltd. acts only as a medium between the buyer and the seller. They are not responsible in any way for any failure on the part of the buyer and the seller to live up to their obligations of for the truth of any warranties or representations, express or implied. Neither does Auction Effertz, Ltd. assume any financial obligation to collect or enforce collection of monies between parties. Any legal action that may in exceptional cases be taken, must be between the buyer and the seller.

Contract: The above terms and conditions shall constitute a contract between the buyer and the seller of each animal sold.

Mail bid: Mail or wire bids may be furnished. Bids must be in the hands of the sale manager in ample time prior to the sale and will be handled in strict confidence.



Auction Effertz, Ltd.

Your Market Masters

NEIL & JAN EFFERTZ

effertz@btinet.net • Cell: 701-471-0153

17350 Hwy. 1804 N. • Bismarck, ND 58503

Ph: 701-223-5202 • Fax: 701-223-5458

www.auctioneffertz.com

Change Service Requested

PRSRTD STD
US POSTAGE
PAID
UNITED PRINTING

Get-Back-To-Grass

Lowline Sale & Field Day

Saturday, Oct. 9, 2010

at the new sale facility at
Pitchford Cattle Company, Athens, TX

Offering 61 Lots:

- 13 Fullblood Females
- 31 Percentage Females
- 10 Fullblood Bulls
- 7 Percentage Bulls



Sponsored By:

**Southwest Lowline Angus
Breeders Association**

www.slaba.us

Mark Roesler, President • 713-805-5916